



Destination: **AHA Conferences**

Your 2026 roadmap to
exhibiting at the heart of
cardiovascular science



7

International Stroke Conference 2026

February 3, 2026 | Pre-Cons and Stroke Nursing Symposia
February 4-6, 2026 | Exhibits
New Orleans, LA
Ernest N. Morial Convention Center

11

EPI|Lifestyle 2026

March 17-20, 2026 | Boston, MA
Sheraton Boston

12

Vascular Discovery 2026

May 13-16, 2026 | Bellevue, WA
Hyatt Regency Bellevue

13

Basic Cardiovascular Sciences 2026

July 13-16, 2026 | Boston, MA
Sheraton Boston

14

Hypertension 2026

October 7-11, 2026 | Crystal City, VA
Hyatt Regency

15

Resuscitation Science Symposium 2026

November 7-8, 2026 | Chicago, IL
McCormick Place Convention Center

Scientific Sessions 2026:

Your route to the heart of cardiovascular science

Meet thousands of engaged decision-makers, showcase your innovations and position your brand at the epicenter of the cardiovascular community.

What our exhibitors say:

"A great experience at Sessions. It's a much better environment for networking than we have experienced at other meetings. I've met more people and have had better conversations than most meetings."

"Standing room only in our Learning Studio. Booth traffic has been great."

90%

of exhibitors at Scientific Sessions are targeting physicians and nurses/nurse practitioners, and **84%** are targeting research scientists

243

average leads per exhibitor with a lead retrieval device.

71%

of exhibitors with a goal, said they reached their goal.

2024 Audience

12,900+
total attendees

10,400+
professional attendees

78% Domestic attendees

54% Physicians

21% Scientists (all types)

17% Other health care professionals

8% Non-health care professionals

Source: 2024 registration and attendee survey data (Chicago), 2024 Scientific Sessions and ReSS registration data, and Scientific Sessions attendee survey data.



Top ten specialties in attendance

(in order by attendance numbers)

- 1 General Cardiology
- 2 Internal Medicine
- 3 Cardiology: Heart Failure
- 4 Cardiology: Interventional
- 5 Cardiology: Electrophysiology
- 6 Cardiology: Pediatric
- 7 Administration
- 8 Cardiology: Prevention
- 9 Cardiology: CV Imaging
- 10 Biological Sciences

Source: 2024 registration data (Chicago).





Science & Technology Hall

The Science & Technology Hall at the American Heart Association's Scientific Sessions is more than an exhibit space—it's a vibrant, interactive hub designed to keep attendees engaged, curious and inspired.

20+ hours of exhibit time is built in, including 12+ hours with limited simultaneous educational programming to increase traffic.

An extensive marketing campaign promotes the Hall before and during Scientific Sessions.

Posters are integrated into the Science & Technology Hall, bringing traffic to the exhibit floor.

Expanded moderated digital poster presentations foster interactive dialogue and draw attendees eager to explore cutting-edge science.



Complimentary coffee breaks are included in the Hall.

VIP passes are available for your customers to see the Science & Technology Hall.

81%

of attendees visit the Science & Technology Hall



The Heart Hub:

Learn, network, recharge

At the heart of every AHA conference is the Heart Hub—a dynamic space for hands-on discovery and engagement in the Science & Technology Hall. Here, attendees explore cutting-edge education or meaningful conversations via:

- **Networking Lounges**
- **Heart Theaters**
- **Food Is Medicine Pavilion**
- **AHA HeartQuarters ... and more**

Turn your booth into a destination!

Drive success with marketing solutions that boost your visibility and traffic:

- Brand awareness
- Lead generation
- Boosted engagement
- Increased booth traffic and program attendance

Meeting News and Navigation

- AHA Mobile Meeting Guide App
- AHAtv
- Essential Guide to Scientific Sessions
- Conference Coverage Website
- Daily Newspaper
- Experience Scientific Sessions Final Program
- Industry Programming Guide
- Journey through Sessions ... and more

Email Marketing

- Morning Agenda Email
- ePreviews and eHighlights
- Exclusive Exhibitor Emails ... and more

On-Site Education and Networking

- Industry Presentations
- Meet the Trialist
- Membership Lounge ... and more

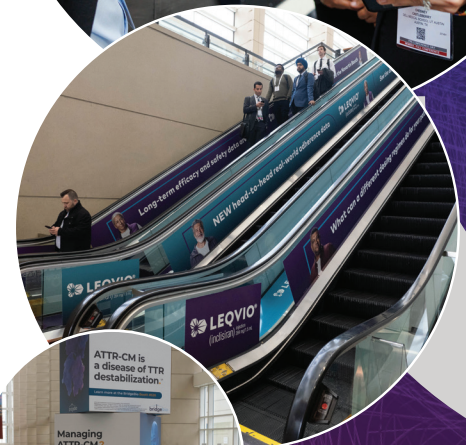
Convention Center Sponsorships

- Abstracts on USB
- Ad Banners
- Coffee Breaks in the Science & Technology Hall
- Escalator Graphics
- Charging Stations
- Park Strips
- Wi-Fi Sponsorship ... and more

Hotel Sponsorships and Hotel Room Marketing

- Hotel Key Cards
- Hotel Room Deliveries
- "Post-It" Style Notes on Hotel Doors
- Doctors Bag
- Elevator Clings
- Column Wraps
- Digital Wall Displays
- Window Clings ... and more

Opportunities are subject to change.



Exhibitors who purchased advertising and/or sponsorships at Scientific Sessions received **1.5x more leads** than exhibitors who did not.

Two-thirds of attendees who visit the exhibit hall are looking for new products and services.



Scan the QR code to view all 2026 marketing opportunities

Exhibiting dates & rates*

Exhibit hours

Saturday, November 7, 2026
 9 a.m.-4:30 p.m. CST

Sunday, November 8, 2026
 9 a.m.-4:30 p.m. CST

Monday, November 9, 2026
 9 a.m.-3 p.m. CST

Breaks

Saturday, November 7, 2026
 9:15-9:45 a.m. CST
 11 a.m.-1:30 p.m. CST
 2:45-3:15 p.m. CST

Sunday, November 8, 2026
 9:15-9:45 a.m. CST
 11 a.m.-1:30 p.m. CST
 3-3:30 p.m. CST

Monday, November 9, 2026
 9:15-9:45 a.m. CST
 11 a.m.-1:30 p.m. CST
 2:45-3 p.m. CST

Move-in Hours

Tuesday, November 3, 2026
 (any booths 20x20 or larger)
 8 a.m.-5 p.m. CST

Wednesday, November 4, 2026
 8 a.m.-5 p.m. CST

Thursday, November 5, 2026
 8 a.m.-5 p.m. CST

Friday, November 6, 2026
 8 a.m.-5 p.m. CST

On-Site Renewal rate through
 January 16, 2026\$44 per sq. ft.

There is no additional charge for islands or corners.

Standard rate begins
 January 19, 2026\$48 per sq. ft.

Public service rate \$30 per sq. ft.

Public service rate is subject to availability. This discounted rate is only available in the nonprofit designated area on the floor. Proof of nonprofit status must be submitted to julie.welsh@heart.org for all new organizations.

Cancellation schedule

Through April 1, 2026
 American Heart Association retains 50% of contracted space fees

Beginning April 2, 2026
 American Heart Association retains 100% of contracted space fees

The American Heart Association requires a 50% deposit before exhibit space will be confirmed. Cancellation or space reduction will result in a 50% penalty. Cancellation details, exhibitor eligibility, space assignment process and priority point schedule are all part of the American Heart Association Scientific Conferences Rules & Regulations. The cancellation policy includes reduction of booth size. For more information and to apply for space, visit exhibitatsessions.org.

Registration and housing open late summer 2026.

We encourage all participants at this year's Scientific Sessions to host a Satellite Event. Scientific Sessions offers a variety of meeting types to help you connect with the scientific community at this once-a-year conference. Satellite Event details will be available spring 2026.

Your sponsorship and advertising dollars count toward your exhibiting priority points.

Ask your account manager for details.

Your exhibits team

Cathleen Gorby (Lead)
 Exhibit Sales and Advertising
 Company Names E-L
 913-344-1305
cgorby@ascendmedia.com

Bridget Blaney
 Advertising & Exhibitor Sales
 Company Names A-D
 773-259-2825
bblaney@ascendmedia.com

Maureen Mauer
 Advertising & Exhibitor Sales
 Company Names M-Z
 913-344-1321
mmauer@ascendmedia.com

Julie Welsh
 Director Exhibits and Sponsorship
 214-706-1943
julie.welsh@heart.org

Lauren Belanger
 Associate Manager Exhibits/Satellite Events
 214-706-1353
lauren.belanger@heart.org

*Exhibit dates, hours and rates are subject to change.

Exhibit at #ISC26

Exhibitors know the value of being at this premier conference:

“We exhibit at 22 conferences a year, but ISC is the best.”

“This is a good meeting for us, and we always see our target customers.”

“Good turn out this year. We’re getting lots of leads.”

88%
of 2025 exhibitors either renewed their exhibit space on-site or indicated they were “extremely likely” or “very likely” to do so.

85%
of attendees visit the Science & Technology Hall.



Audience Snapshot

2025 Attendance



5,900+
total attendees

5,200+ professional attendees

3,300+
physicians and other stroke professionals

600
scientists
(all types)

84%
domestic

1,100
nurses/nurse practitioners

200+
non-health care professionals

Top 10 specialties in attendance (in order by number of attendees)

- Neurology: Stroke
- Neurology: General
- Neurology: Ischemic Stroke
- Administration
- Emergency Medicine
- Critical Care/Intensive Care
- Neurology: Critical Care
- Neurology: Surgery
- Internal Medicine
- Neurology: Endovascular



85%
of attendees say they are **likely to recommend ISC** to professional colleagues.

51% of ISC25 attendees do not regularly attend any other Scientific Sessions/Annual Meetings.

ISC is the **ONLY** event where you will see these attendees!

Source: ISC25 registration data and post-event attendee survey.

Science & Technology Hall:

The hub for innovation, networking and discovery

Innovation Zone

includes interactive displays with technologically advanced, immersive training for attendees.



An extensive marketing campaign

promotes the Science & Technology Hall to attendees before and during the event.



VIP passes (distributed by you) encourage your customers to visit the Science & Technology Hall.



Dedicated exhibit hours give you direct access to thousands of stroke health care professionals.



Educational programming in the Science & Technology Hall

focuses on the latest in stroke and cerebrovascular medicine and treatment. Poster and Moderated Poster presentations take place adjacent to the Hall, while additional educational programming takes place within the Hall and in HeadQuarters.

Learning Studios inside the Science & Technology Hall present the latest advances in stroke and cerebrovascular product and therapeutic treatments, with complimentary snacks and lunches provided for attendees by the American Heart Association/American Stroke Association (AHA/ASA).



HeadQuarters

The pulse of the Science & Technology Hall! HeadQuarters draws attendees in to engage with all the Hall has to offer.

14 dedicated hours to visit exhibitors in the Science & Technology Hall, including time with limited simultaneous educational programming to increase traffic.



ISC26 exhibiting dates & rates

Exhibit Hours*

Wednesday, Feb. 4, 2026
 9 a.m.-4 p.m. CST

Thursday, Feb. 5, 2026
 9 a.m.-4 p.m. CST

Breaks*

Hours during which only limited programming is taking place:

10:45-11:00 a.m. CST
 12:30-2:30 p.m. CST
 3:30-3:45 p.m. CST

*Exhibit dates, hours and rates are subject to change.

Exhibit space rates

Standard rate..... \$46 per sq. ft.

Public service rate \$28 per sq. ft.

Public service rate is subject to availability. This discounted rate is only available in the nonprofit designated area on the floor. Proof of nonprofit status must be submitted to exhibits@heart.org for all new organizations. Please add the subject line, "Proof of nonprofit status" to the email when submitting proof of nonprofit status.

Cancellation schedule

Beginning July 28, 2025

American Heart Association/American Stroke Association retains 100% of contracted space fees

*American Heart Association/American Stroke Association requires a 50% deposit before exhibit space will be confirmed. Cancellation or space reduction will result in a 50% penalty. The cancellation policy can be found in the American Heart Association/American Stroke Association Scientific Conferences **Rules & Regulations** at exhibitatstroke.org and is a legally binding part of the exhibit space application/contract.*

*Exhibitor eligibility, space assignment process and priority point schedule are all part of the American Heart Association/American Stroke Association Scientific Conferences **Rules & Regulations**. For more information and to apply for space, visit exhibitatstroke.org.*



The Satellite Event application process for the International Stroke Conference 2026 in New Orleans is open.

Contact your exhibits team

Cathleen Gorby (Lead)
 Exhibit Sales and Advertising
 Company Names E-L
 913-344-1305
cgorby@ascendmedia.com

Bridget Blaney
 Advertising & Exhibitor Sales
 Company Names A-D
 773-259-2825
bblaney@ascendmedia.com

Maureen Mauer
 Advertising & Exhibitor Sales
 Company Names M-Z
 913-344-1321
mmauer@ascendmedia.com

Chris Torsy
 Exhibits Manager
 214-706-1175
chris.torsy@heart.org

Lauren Belanger
 Associate Manager, Satellite Events
 214-706-1353
lauren.belanger@heart.org

American Heart Association/ American Stroke Association
 7272 Greenville Ave.
 Dallas, TX 75231-4596
strokeconference.org

Housing: onPeak
 855-922-3353
isc@onpeaksupport.com

Registration: Maritz/CDS
 508-743-8517
internationalstroke@xpressreg.net

March 17-20, 2026 | Boston, Massachusetts
Sheraton Boston

Extend your reach with cardiology professionals dedicated to Epidemiology & Prevention and Lifestyle and Cardiometabolic Health! The EPI | Lifestyle conference focuses on the development and application of translational and population science to prevent heart disease and stroke, and foster cardiovascular health.



2025 Attendance

80%

of attendees were "extremely" or "very" satisfied with the 2025 meeting.

Source: 2025 attendee post-meeting survey

850+

Professional attendees

710

- Physicians
- Scientists: All types

Source: 2025 registration data

90%

of attendees are from the U.S.



Source: 2025 attendee post-meeting survey

98%



of attendees say they achieved their primary objective for attending EPI | Lifestyle.

Top specialties in attendance

(in order)

- 1 Epidemiology
- 2 Internal Medicine
- 3 General Cardiology
- 4 Cardiology Prevention
- 5 Public Health
- 6 Nutrition
- 7 Behavioral Sciences/Medicine
- 8 Population Health
- 9 Diabetes and Metabolism
- 10 Hypertension

Source: 2025 registration data

Rates

Rates include table, two chairs, wastebasket and two conference registration(s).

Industry: \$3,000

Non-profit: \$1,500

For more information and to apply online, visit exhibitatsessions.org/epilifestyle

All rates are net.

Cancellations are nonrefundable. Dates are subject to change.

Present your solution to multiple audiences and save!

20% discount on each booth if you exhibit in three or more specialty meetings.

15% discount on each booth if you exhibit in two specialty meetings.

Discounts are not retroactive.

To reserve your exhibit space, contact Criss John at cjohn@ascendmedia.com or 913-344-1420. View AHA Rules & Regulations at exhibitatsessions.org.



Vascular Discovery: From Genes to Medicine



May 13-16, 2026 | Bellevue, Washington
Hyatt Regency Bellevue

Where today's discoveries spark tomorrow's therapies. Vascular Discovery: From Genes to Medicine brings together researchers and clinicians from around the world in arteriosclerosis, thrombosis, vascular biology, peripheral vascular disease, genomics and precision medicine. For exhibitors, it's a unique chance to connect directly with the scientists and thought leaders driving innovation in vascular health in an intimate setting where your solutions can stand out and spark meaningful conversations.



2025 Attendance

84%

of attendees were "extremely" or "very" satisfied with the 2025 meeting.

Source: 2025 attendee post-meeting survey

100%

of attendees say they achieved their primary objective for attending Vascular Discovery.

90%

of attendees are "extremely likely" or "very likely" to recommend Vascular Discovery to a colleague.

500+

Professional attendees

350

Scientists: Basic, clinical, research and translational

150+

Clinicians and Physicians

Source: 2025 registration data

Top specialties in attendance

(in order)

- 1 Arteriosclerosis
- 2 Vascular Medicine
- 3 Cell Biology
- 4 Surgery: Vascular
- 5 Biological Sciences
- 6 Biochemistry
- 7 Molecular Biology
- 8 General Cardiology
- 9 Diabetes and Metabolism
- 10 Thrombosis

Source: 2025 registration data

Rates

Rates include table, two chairs, wastebasket and two conference registration(s).

Industry: \$3,000

Non-profit: \$1,500

For more information and to apply online, visit exhibitatsessions.org/vascular-discovery

All rates are net. Cancellations are nonrefundable. Dates are subject to change.

Present your solution to multiple audiences and save!

20% discount on each booth if you exhibit in three or more specialty meetings.

15% discount on each booth if you exhibit in two specialty meetings.

Discounts are not retroactive.

To reserve your exhibit space, contact Criss John at cjohn@ascendmedia.com or 913-344-1420.

View AHA Rules & Regulations at exhibitatsessions.org.



July 13-16, 2026 | Boston, Massachusetts
Sheraton Boston

One of the largest global meetings dedicated to fundamental and translational cardiovascular science, Basic Cardiovascular Sciences is where breakthroughs begin. Attendees include leading researchers in microRNAs, gene and cell therapy, cardiac development, tissue engineering, and iPS cells, many of whom are also shaping the next generation of diverse investigators. Exhibitors gain access to a dynamic community of influencers and rising stars, making BCVS the ideal place to showcase innovations, build long-term relationships, and align your brand with the future of cardiovascular science.



2025 Attendance

84%

of attendees were "extremely" or "very" satisfied with the conference.

Source: 2025 attendee post-meeting survey

96%

of attendees say they achieved their primary objective for attending BCVS.

89%

of attendees are "extremely" or "very" likely to recommend BCVS to a colleague.

950+

Professional attendees

845+

- Physicians
- Scientists: all types

110+

- Other health care professionals
- Non-health care professionals

Source: 2025 registration data

Top specialties in attendance

(in order)

- 1 Biological Sciences
- 2 Cardiology: Heart Failure
- 3 Cell Biology
- 4 General Cardiology
- 5 Physiology
- 6 Molecular Biology
- 7 Biochemistry
- 8 Biomedical Engineer
- 9 Pharmacology
- 10 Electrophysiology

Source: 2025 registration data.

Rates

Rates include table, two chairs, wastebasket and two conference registration(s).

Industry: \$3,000

Non-profit: \$1,500

For more information and to apply online, visit exhibitatsessions.org/bcvs

All rates are net.

Cancellations are nonrefundable.

Dates are subject to change.

Present your solution to multiple audiences and save!

20% discount on each booth if you exhibit in three or more specialty meetings.

15% discount on each booth if you exhibit in two specialty meetings.

Discounts are not retroactive.

To reserve your exhibit space, contact Criss John at cjohn@ascendmedia.com or 913-344-1420.

View AHA Rules & Regulations at exhibitatsessions.org.

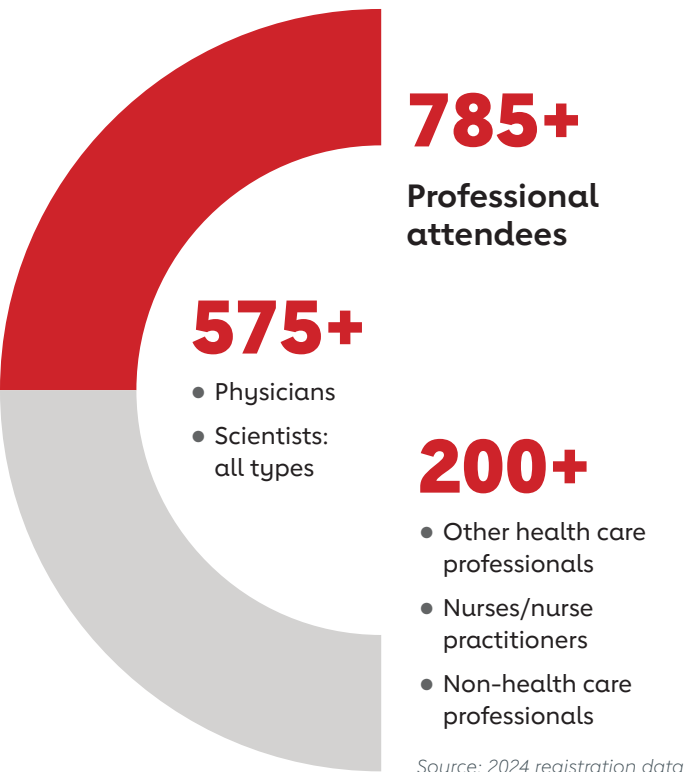


October 7-11, 2026 | Crystal City, Virginia
Hyatt Regency

Hypertension Scientific Sessions is the premier meeting for experts exploring the full spectrum of hypertension research, from basic science to clinical practice. Attendees focus on the critical connections between hypertension, kidney disease, stroke, obesity and genetics. For exhibitors, this highly specialized gathering offers a direct path to the clinicians and scientists who are actively seeking solutions to improve patient outcomes in hypertension-related diseases. The intimate, collaborative environment means more meaningful conversations and higher visibility for your products and services.



2025 Attendance



84%

of attendees said they were “extremely” or “very” likely to recommend Hypertension to a colleague.

Top specialties in attendance

(in order)

- 1 Hypertension
- 2 Physiology
- 3 Nephrology
- 4 Internal Medicine
- 5 General Cardiology
- 6 Administration
- 7 Pharmacology
- 8 Biological Sciences
- 9 Cardiology: Prevention
- 10 Pharmaceutical Industry

Source: 2024 registration data.

84%

of attendees are from the U.S.



Source: 2024 attendee post-meeting survey

Rates

Rates include table, two chairs, wastebasket and two conference registration(s).

Industry: \$3,000
Non-profit: \$1,500

For more information and to apply online, visit exhibitatsessions.org/hypertension

All rates are net.
Cancellations are nonrefundable.
Dates are subject to change.

Present your solution to multiple audiences and save!

20% discount on each booth if you exhibit in three or more specialty meetings.

15% discount on each booth if you exhibit in two specialty meetings.

Discounts are not retroactive.

To reserve your exhibit space, contact Criss John at cjohn@ascendmedia.com or 913-344-1420.

View AHA Rules & Regulations at exhibitatsessions.org.

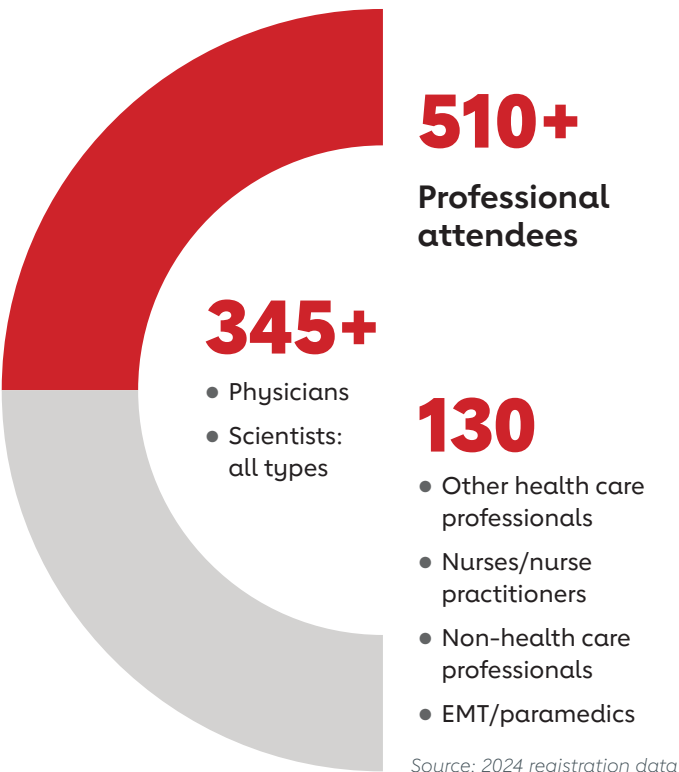



November 7-8, 2026 | Chicago, Illinois
McCormick Place Convention Center

Resuscitation Science Symposium is the leading forum for advancing science at the intersection of critical care medicine, emergency cardiovascular care and cardiopulmonary resuscitation. ReSS draws a multidisciplinary audience focused on translating bench-to-bedside discoveries and community-based approaches into better outcomes. Exhibitors benefit from the opportunity to connect with a highly engaged group of specialists who are passionate about resuscitation innovation, giving your company a powerful platform to share solutions that save lives.



2024 Attendance



70% 
of attendees are "extremely" or "very" likely to attend the meeting again.

Top specialties in attendance

(in order)

- 1 Emergency Medicine
- 2 Critical Care/Intensive Care
- 3 General Cardiology
- 4 Pediatrics: Non-Cardiology
- 5 Anesthesiology
- 6 Internal Medicine
- 7 Administration
- 8 Cardiology: Interventional
- 9 Epidemiology
- 10 Cardiology: Pediatric

Source: 2024 registration data.

73% 
of attendees are from the U.S.

Rates

Rates include table, two chairs, wastebasket and two conference registration(s).

Industry: \$3,000
Non-profit: \$1,500

For more information and to apply online, visit exhibitatsessions.org/ress

All rates are net.
Cancellations are nonrefundable.
Dates are subject to change.

Present your solution to multiple audiences and save!

20% discount on each booth if you exhibit in three or more specialty meetings.

15% discount on each booth if you exhibit in two specialty meetings.

Discounts are not retroactive.

To reserve your exhibit space, contact Criss John at cjohn@ascendmedia.com or 913-344-1420. View AHA Rules & Regulations at exhibitatsessions.org.

See you in 2026!

Save the Dates

Scientific Sessions 2026

November 6-9, 2026 | Sessions
November 7-9, 2026 | Exhibits
Chicago, IL
McCormick Place Convention Center

International Stroke Conference 2026

February 3, 2026 | Pre-Cons and
Stroke Nursing Symposia
February 4-6, 2026 | Exhibits
New Orleans, LA
Ernest N. Morial Convention Center

EPI|Lifestyle 2026

March 17-20, 2026 | Boston, MA
Sheraton Boston

Vascular Discovery 2026

May 13-16, 2026 | Bellevue, WA
Hyatt Regency Bellevue

Basic Cardiovascular Sciences 2026

July 13-16, 2026 | Boston, MA
Sheraton Boston

Hypertension 2026

October 7-11, 2026 | Crystal City, VA
Hyatt Regency

Resuscitation Science Symposium 2026

November 7-8, 2026 | Chicago, IL
McCormick Place Convention Center



Scan the QR code
to learn more about
all AHA conferences
opportunities.